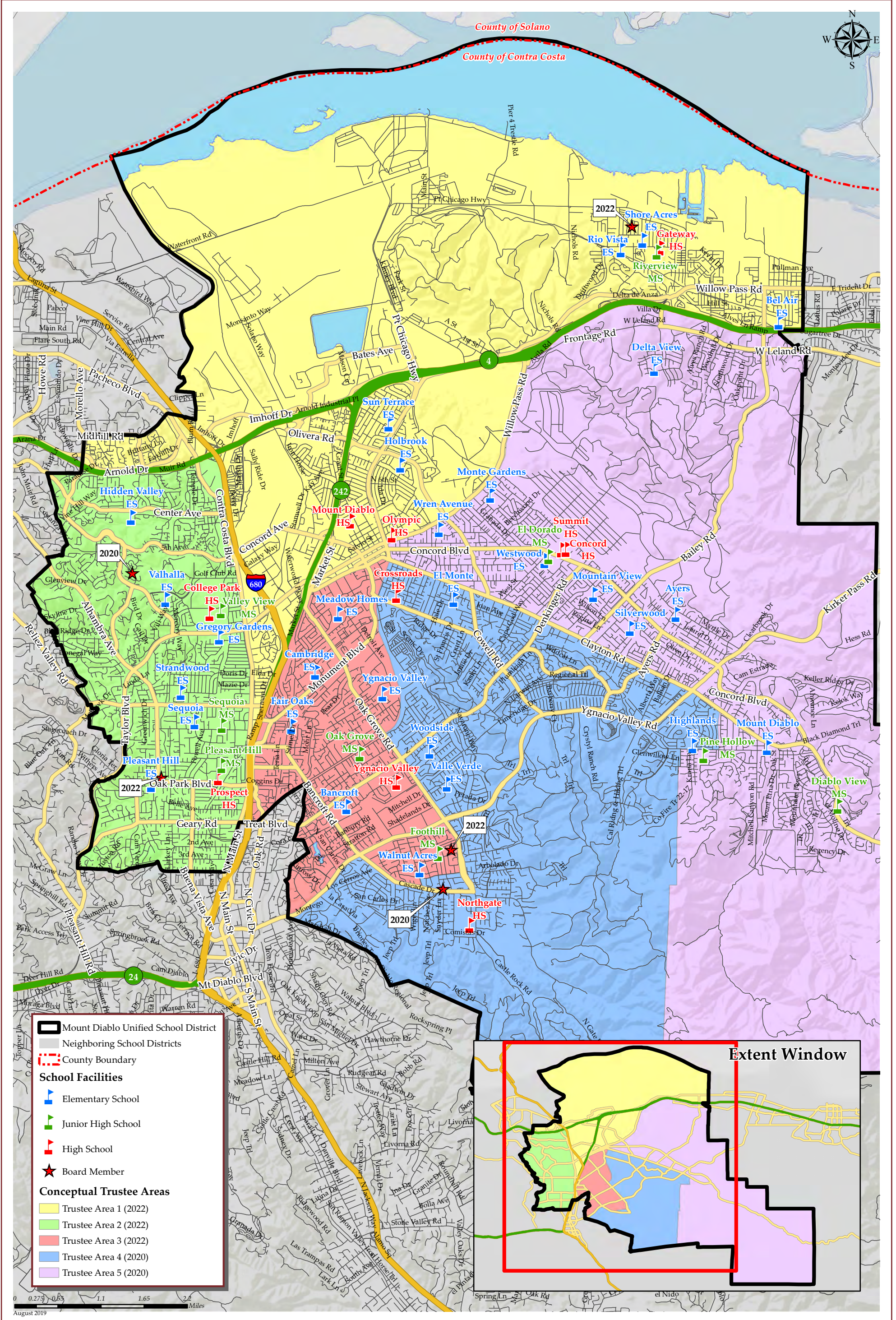


MT DIABLO UNIFIED SCHOOL DISTRICT CONCEPTUAL TRUSTEE AREAS - SCENARIO GREEN



Legend

- Mount Diablo Unified School District
- Neighboring School Districts
- County Boundary
- School Facilities**
 - Elementary School
 - Junior High School
 - High School
 - Board Member
- Conceptual Trustee Areas**
 - Trustee Area 1 (2022)
 - Trustee Area 2 (2022)
 - Trustee Area 3 (2022)
 - Trustee Area 4 (2020)
 - Trustee Area 5 (2020)

MT DIABLO UNIFIED SCHOOL DISTRICT

CONCEPTUAL TRUSTEE AREAS - SCENARIO GREEN

Total Population (2010 Census)						
	Trustee Area 1	Trustee Area 2	Trustee Area 3	Trustee Area 4	Trustee Area 5	Variance
Population	49,483	49,219	49,475	50,845	51,349	
Population Variance	-591	-855	-599	771	1,275	4.25%
	-1.18%	-1.71%	-1.20%	1.54%	2.55%	
Hispanic/Latino	18,837	5,963	19,795	7,335	9,360	
	38.07%	12.12%	40.01%	14.43%	18.23%	
White	20,270	34,208	19,827	32,490	30,665	
	40.96%	69.50%	40.07%	63.90%	59.72%	
Black/ African American	3,298	936	1,865	1,117	1,801	
	6.66%	1.90%	3.77%	2.20%	3.51%	
American Indian/ Alaska Native	197	117	123	133	139	
	0.40%	0.24%	0.25%	0.26%	0.27%	
Asian	4,714	5,893	5,793	7,234	7,078	
	9.53%	11.97%	11.71%	14.23%	13.78%	
Native Hawaiian/ Other Pacific Islander	341	57	337	157	222	
	0.69%	0.12%	0.68%	0.31%	0.43%	
Other	120	81	117	140	147	
	0.24%	0.16%	0.24%	0.28%	0.29%	
Two or More Races	1,706	1,964	1,618	2,239	1,937	
	3.45%	3.99%	3.27%	4.40%	3.77%	

Population 18 and Over (2010 Census)						
	Trustee Area 1	Trustee Area 2	Trustee Area 3	Trustee Area 4	Trustee Area 5	
Population	37,381	39,185	37,683	39,598	39,824	
Population Variance	-1,353	451	-1,051	864	1,090	
	-3.49%	1.16%	-2.71%	2.23%	2.81%	
Hispanic/Latino	12,256	4,090	13,122	4,947	6,305	
	32.79%	10.44%	34.82%	12.49%	15.83%	
White	17,366	28,149	16,974	26,455	25,060	
	46.46%	71.84%	45.04%	66.81%	62.93%	
Black/ African American	2,360	688	1,421	873	1,380	
	6.31%	1.76%	3.77%	2.20%	3.47%	
American Indian/ Alaska Native	170	101	99	106	108	
	0.45%	0.26%	0.26%	0.27%	0.27%	
Asian	3,889	5,012	4,806	5,847	5,615	
	10.40%	12.79%	12.75%	14.77%	14.10%	
Native Hawaiian/ Other Pacific Islander	239	53	225	117	176	
	0.64%	0.14%	0.60%	0.30%	0.44%	
Other	86	58	73	93	95	
	0.23%	0.15%	0.19%	0.23%	0.24%	
Two or More Races	1,015	1,034	963	1,160	1,085	
	2.72%	2.64%	2.56%	2.93%	2.72%	

Citizens by Voting Age Population Estimate (2013-2017)						
	Trustee Area 1	Trustee Area 2	Trustee Area 3	Trustee Area 4	Trustee Area 5	
Population	33,737	37,903	29,581	39,540	40,999	
Population Variance	-2,615	1,551	-6,771	3,188	4,647	
	-7.19%	4.27%	-18.63%	8.77%	12.78%	
Hispanic/Latino	9,230	4,249	5,301	5,074	5,915	
	27.36%	11.21%	17.92%	12.83%	14.43%	
White	16,894	27,498	16,806	26,321	26,187	
	50.08%	72.55%	56.81%	66.57%	63.87%	
Black/ African American	2,324	917	1,718	1,379	1,922	
	6.89%	2.42%	5.81%	3.49%	4.69%	
American Indian/ Alaska Native	153	70	58	143	40	
	0.45%	0.18%	0.20%	0.36%	0.10%	
Asian	3,753	3,574	4,379	5,299	5,234	
	11.12%	9.43%	14.80%	13.40%	12.77%	
Native Hawaiian/ Other Pacific Islander	199	191	65	40	231	
	0.59%	0.50%	0.22%	0.10%	0.56%	
Other	0	0	0	0	0	
	0.00%	0.00%	0.00%	0.00%	0.00%	
Two or More Races	1,184	1,404	1,254	1,284	1,470	
	3.51%	3.70%	4.24%	3.25%	3.59%	